



广州莱丽电子科技有限公司
LOLY(GUANGZHOU)CO.,LTD

地址：广东省广州市天河区黄埔大道中207号海景花园B-2101
ADD: B-2101, Sea View Garden, No 207, HuangPu DaDao Zhong, Tianhe District, Guangzhou, China.
TEL: 86-20-85699184 / 85699305 FAX: 86-20-85699471
WEB: www.loly.com.cn www.lolyjet.com E-MAIL: sales@loly.com.cn

TAIMES 3204S SOLVENT PRINTER



Model No:[solvent_printer_3204S](#)

TAIMES 3204S SOLVENT PRINTER Advance Technic:

- * Original Japanese drop on demand piezo print head with steel plate protected, 510 active nozzles/print head, 71.8mm printing width.
- * 4 color plus 720dpi makes unmatched color and high resolution.
- * The voltage of the print head, automatically adjustable to the temperature, prevents blockage caused by the change of temperature.

- * The function of skipping white space is added to increase productivity.
- * The adjustment of bi-direction, step and carriage moving speed can be made during printing.
- * Edge feather function can blur the pass line and feather the pass edge.
- * Delicately designed alloy-aluminum platform.

MECHANICAL MOTION SECTION



Powerful LCD control panel brings a user friendly interface.



Problem free and long life DC servo brushless motor in professional servo system ensures high precision in mechanical system.



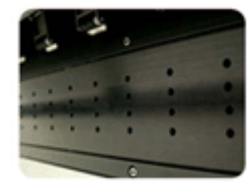
Strengthened steel girder plus high precision linear guide makes every drop of ink onto the right position and brings high resolution.



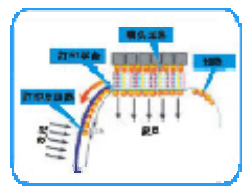
Extra 50% media pressing system give a precise feeding and flat media moving, increases printing resolution and decrease bandings.



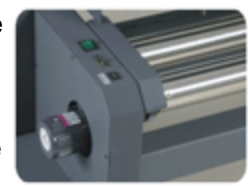
Alignment of bi-direction rectangle and moving speed of carriage can be accomplished while printing.



Built in vacuum hold down system ensures the flatness of media .so as to protect the printhead and improves printing resolution.



Tri Heater system warms up media before printing, improves absorbability of media and help dry printing job, so as to enhance outdoor durability.



Infrared sensor, automatic tension sen

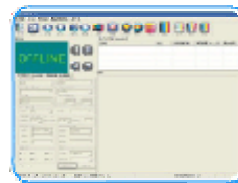
ELECTRONIC CONTROL SECTION



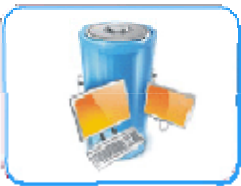
Industrial piezo printhead from SII printek Inc,Brings unprecedented stability ,reliability and life expectation into digital printing .35PL ink drop size with 4 colors presents unquestionable color reproduction ,speed and resolution at true 720dpi,One color at one printhead makes alignment much easier; mechanically integrated installation brings outmost printing performance and quality



100% black color can print black text job and no need for mixture of 3 or 4 color.



Powerful and user friendly RIP and excellent ICC profiling system assures vivid and accurate color reproduction.



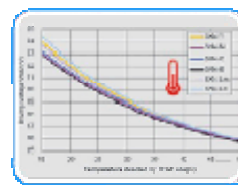
Printing can be continued after unpurposive power cut.



Double raster controlling system plus blank skipping function improves productivity and commercial benefit.



Adopt USB2.0 output system ,faster and flexible.



Variable printhead voltage adjustment along with temperature, plus professional ink ensures fluent and printing



The latest technology funtion-Single color positive cleaning system.It allows user to clean any single printhead in one time .As a result,it makes jobs much more effective,save ink,reduce printhead consumption,ensure perfect printing quality.



Print bracker:After finish printing,this device can easily and firmly protect the printheads,extend lifetime of printheads.

Product Model	TAIMES 3204S SOLVENT PRINTER	
Printhead	SPT510-35PL	
Number of Printhead	4 Heads	
Maximum Print Width	3200mm	
Output (m²/h)	Print Mode	Standard Output (m² /h)
	240x540dpi 3pass	48
	240x720dpi 4pass	37
	240x540dpi 6pass	26
	360x540dpi 3pass	36
	360x720dpi 4pass	27
	360x540dpi 6pass	18
	360x720dpi 8pass	14
Ink	Type :	Solvent Ink / ECO-Solvent Ink
	Color :	4 Colors(C , M , Y , K ,)
	Capacity :	5L Per Main Tank of Each Color
	Ink Supply System :	Low Ink Detector, Auto or Manual Ink Supply System
Media	Width :	3300mm
	Type :	Vinyl, Flex, Polyester, Back-lit Film, Window Film, etc
Auto Media Feeding System	Equipped (Max. Media Weight 80kg)	
Auto Cleaning System	Positive Pressure Cleaning Anti-clogged Flash Function & Capping System	

Pre-heating & Drying System	Equipped
Clamp	Equipped
Print Interface	USB2.0
Printhead Height	2 to 4 mm Above Media Adjustable
RIP Software	Maintop , UltraPrint , PhotoPrint , Topaz , Wasatch , Caldera
Input Power	AC 220V ,50Hz/60Hz
Machine Dimension	L4,300 x W800 x H1,160 mm Net Weight : 340Kg
Package Dimension	L4,450 x W870 x H1,300 mm Gross Weight : 420Kg
Operation Environment	Temperature: 20~28 °C Humidity: 40%~60%

All parameters above subject to change without prior notice.



Sub Ink Tanks



Printhead Board



Printhead Plate



SPT255 Printheads



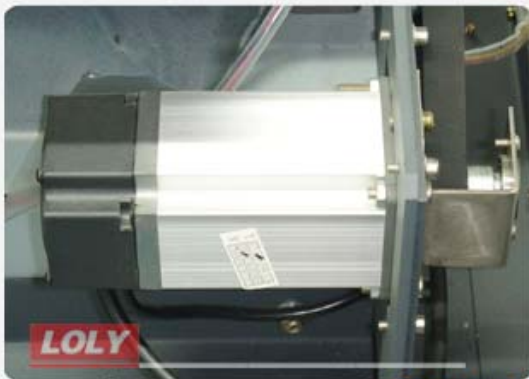
LCD_PRINTING



Print Table



Servo Drivers



Y Servo Motor

Thank you!

LOLY(Guangzhou) Co.,Ltd.

ADD: B-2101, Sea View Garden, No. 207 Huang Pu Da Dao Zhong,
Tianhe district, Guangzhou China,

Tel: +8620- 8569 9184 , 8569 9305 Fax: +8620- 8569 9471

Web: <http://www.loly.com.cn/> , <http://www.solvent-printer.com.cn/>

E-mail: sales@loly.com.cn , support@loly.com.cn

For more details, please send email to us or visit our office.

We warmly welcome your coming. Thanks again.